



Waste Water Treatment Plants Consulting and Commissioning



DeltAcque

DELTACQUE SRL

As a concrete and world widely acknowledged reality, develops efficient solutions for waste water purification, applied to tannery, textile, food production, wine, agriculture and zootechnical, paper, municipal, chemical and pharmaceutical field.

A company with more than 40 years of experience, skilled to face every kind of request, always keeping in focus the technical/economic needs of the Customer and the respect of the Environment.

STRENGTHS OF DELTACQUE TECHNOLOGY:

- Exclusive core business based on WWTP design
- High flexibility for problems solving in purification field, from small to big firms
- Long-standing global experience gained in 5 continents, developing different solutions for every kind of water discharge and extreme climate/environmental conditions
- Assured achievement of requested performances
- Direct assistance and management of the WWTP after the start-up period as long as requested by the Customer
- Reduction of the resources consumption and recovery systems development for water and chemicals



APPLIED TECHNOLOGY

The treatment technology adopted by **DELTAQUE**, universally recognized, affirmed and consolidated during the years, solves the pollution matter of both industrial and domestic wastewater in a simple and economic way, through the development of engineering solutions suitable for every situation.

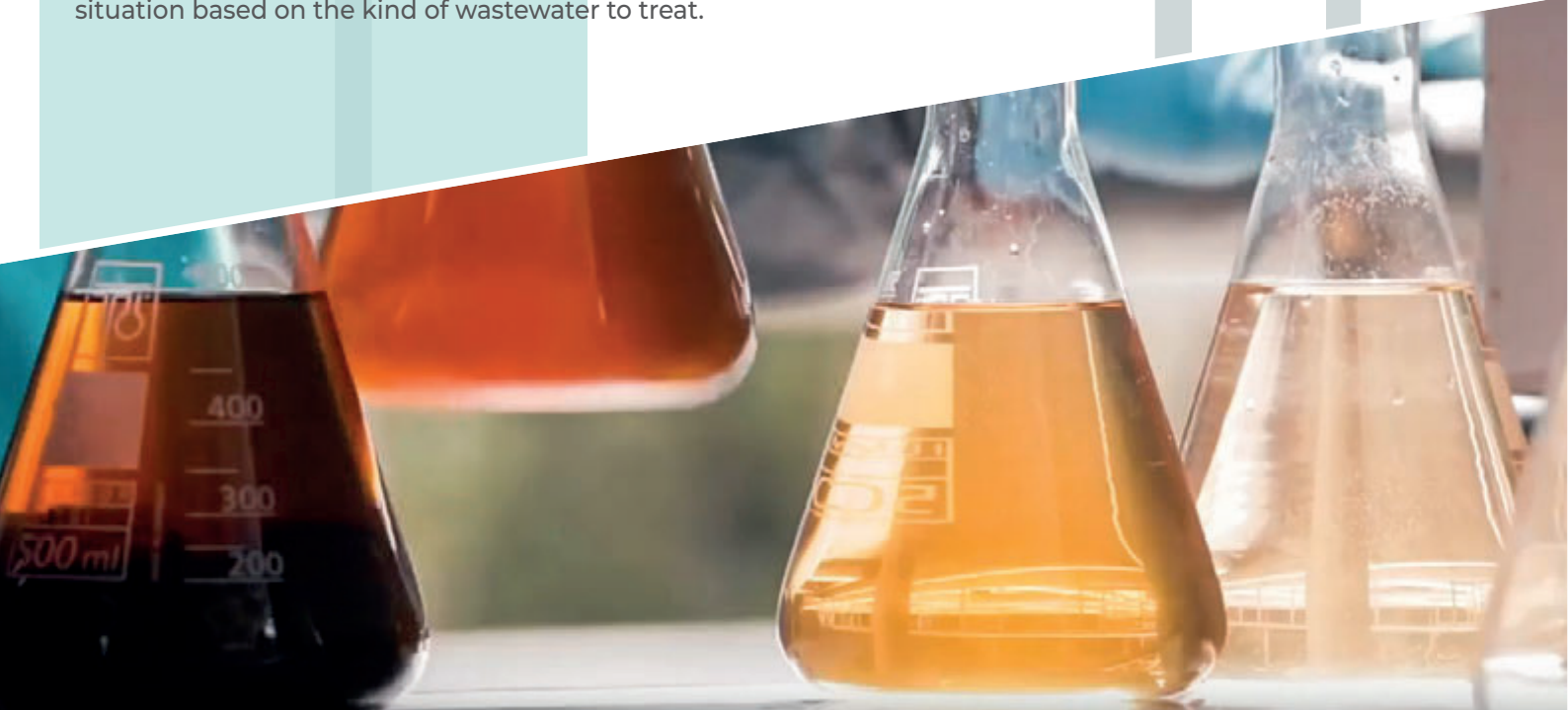
The purification process, developed by **DELTAQUE** and based on natural biodynamic principles using the bacteria action for the polluting charge abatement, allows to maximize the plant purification yield optimizing the biological cycle with activated sludge and the use of avantgarde equipment, with the aim to reduce management costs and resources consumption.

The main advantages obtained through the biological process application for wastewater treatment are:

- reduction of sludge production;
- reduction of chemicals use;
- reduction of electrical consumption;
- increase of general treatment efficiency;
- simplification of management;
- eventual recovery of water and chemicals;
- bad odors elimination.

RESEARCH AND DEVELOPMENT

DELTAQUE constantly carries out research of new trade markets for different products and devices, to offer the Customers more innovative technological solution. Furthermore, thanks to the laboratory experimentations and building of dedicate pilot plants, Deltacque is able to define the more recommended development field for every situation based on the kind of wastewater to treat.





PRELIMINARY FEASIBILITY STUDY

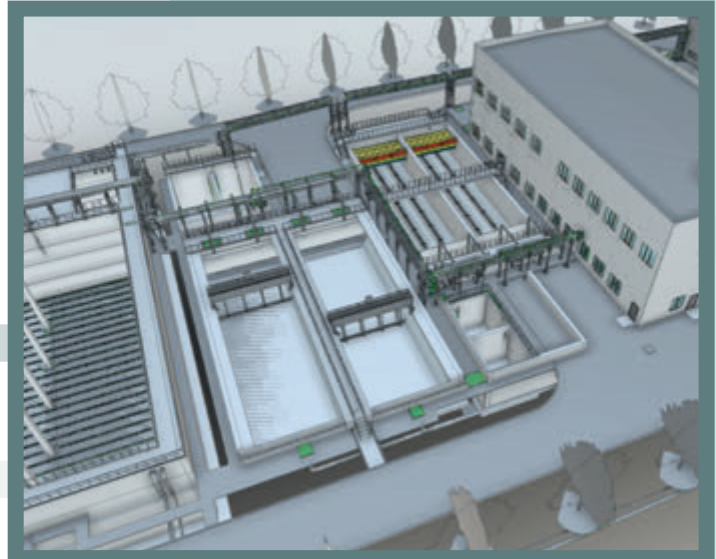
Identification of the Customer's needs, analysis of the main parameters of the water to be treated and evaluation of the existing structural situation give us the instruments to develop a preliminary study of the various purification solutions including all technical and economic details. The comparison of the possible alternative solutions will describe the achievable performances, the investment costs and the equipment



DEFINITIVE AND EXECUTIVE PROJECT

Once the data and information have been collected, the project phase defines the plant design adopted on the basis of the effective technical and economic/management needs of the Customer.

The detailed design is developed by a technical office, supervised by the project manager and an electrical/automation person in charge. This phase allows both the definition of the basic conceptual engineering (plans, flow diagrams, process calculation, equipment positioning and technical specifications) and the detail and process engineering (hydraulic lines sketch, electric components list, process description, control and management equipment, architectural drawings and general specification of civil works).



SALE AND EQUIPMENT DEVELOPMENT

All the process equipment, the control equipment and accessories composing the plant are carefully selected by our technical staff to assure the maximum organicity of the system.

The electrical components and control/automation switchboards are tested before the delivery.

The functioning and supervision logics are specifically studied on the basis of Customer's necessities.

The plants are carried out following the regulations in force in the Customer's country.



ASSEMBLY AND START UP

Deltacque's technical staff is highly qualified and, thanks to the multidisciplinary skills, can supervise the fulfillment of civil works to supply technical assistance during equipment assembly and related electrical/hydraulic connections.

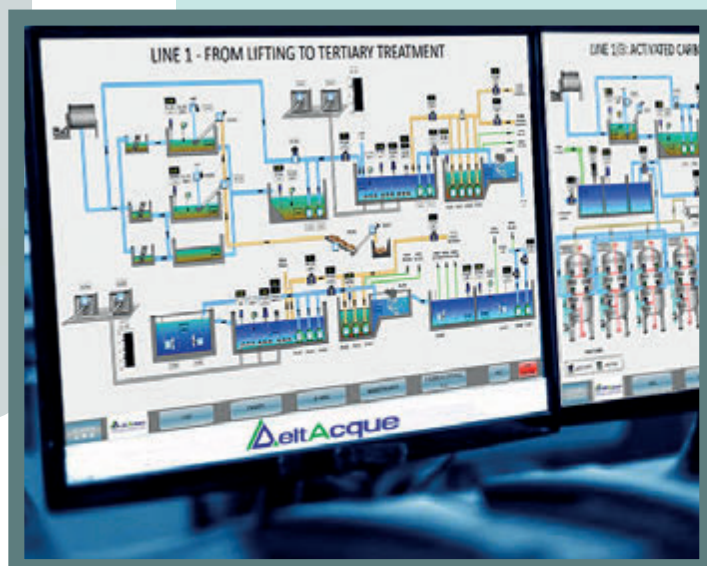
Further to the installation phase, Deltacque's staff will take care of the test, start up and calibration of the equipment, performing in the meantime the local staff training to allow an optimal and autonomous management of the system.



ASSISTANCE AND TECHNICAL MANAGEMENT

Deltacque offers a technical assistance service after the installation phase with scheduled interventions on the spot (on weekly/monthly basis).

Thanks to the skilled staff, Deltacque can offer a supervision and remote control service from Italy toward every country in the world.



DELTACQUE'S PRODUCTS:

- Industrial wastewater purification
- First rain water treatment
- Reduction of nitrogen load from zootechnical effluents
- Wastewater odor abatement
- Recovery and reuse of water for industrial process
- Recovery and reuse of chemicals
- ZLD plants (Zero Liquid Discharge)
- Discharge percolate treatment
- SBR plants (Sequential Batch Reactor)
- MBR plants (Membrane Bioreactor)

INDUSTRIAL AND DOMESTIC WASTE WATER TREATMENT

SLUDGE TREATMENT SYSTEM

BAD ODORS AND GASEOUS EMISSIONS TREATMENT

RECOVERY, RESTORATION AND REUSE OF PROCESS WATERS

RECOVERY, RESTORATION AND REUSE OF PROCESS RAW MATERIALS (MPS)



DELTACQUE SRL

Via San Tommaso 135 a/b
56029 - Santa Croce sull'Arno (PI) Italy
T. +39 0571 360727 | F. +39 0571 367526
www.deltacque.com | info@deltacque.com

CERTIFIED QUALITY
MANAGEMENT SYSTEM

CQY
CERTIQUALITY

UNI EN ISO 9001:2015



CERTIQUALITY
IS MEMBER OF
CISQ FEDERATION